

CR 210 , East of I-95 St. Johns County, FL

Very active Commercial & Residential area. Located less than 1 mile east of I-95. CR 210 is one of the busiest residential corridors in St. Johns County, FL. Conveniently located South of I-295 & North of World Golf Village

Off Site Retention

Concurrency in place

Utilities to the site

Parcel 4: 2.9± acres
Plans for up to a 42,841 sf building

Parcel 8: 1.8± acres
Plans for up to a 26,500 sf building

Parcel 9a: 1.2± acres
Plans for up to a 17,700 sf building

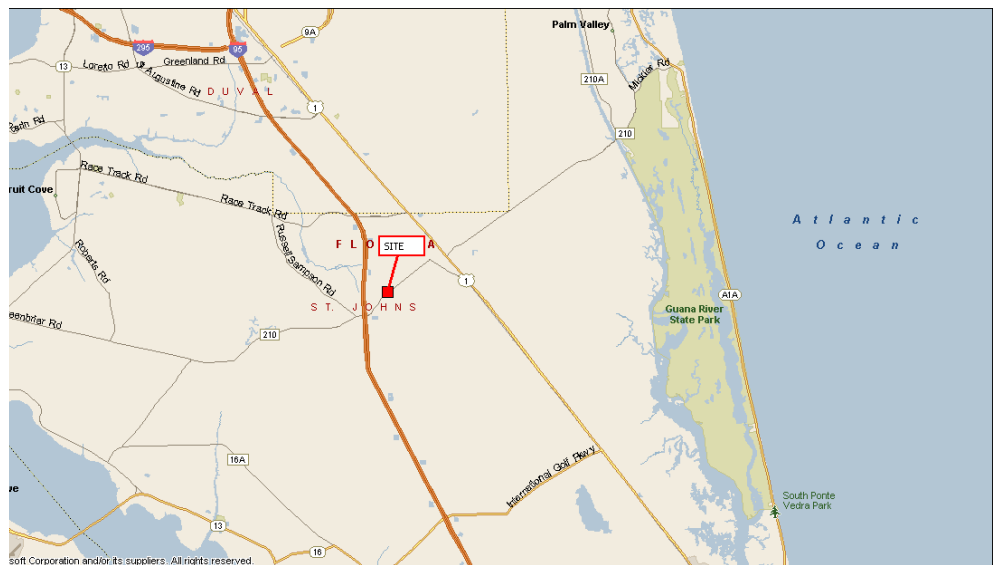
Zoned: PUD
(allows retail uses)

Pricing: \$18 / Sq. Ft.



Information provided is deemed to be accurate but is subject to errors and/or omissions.

Retail Land For Sale

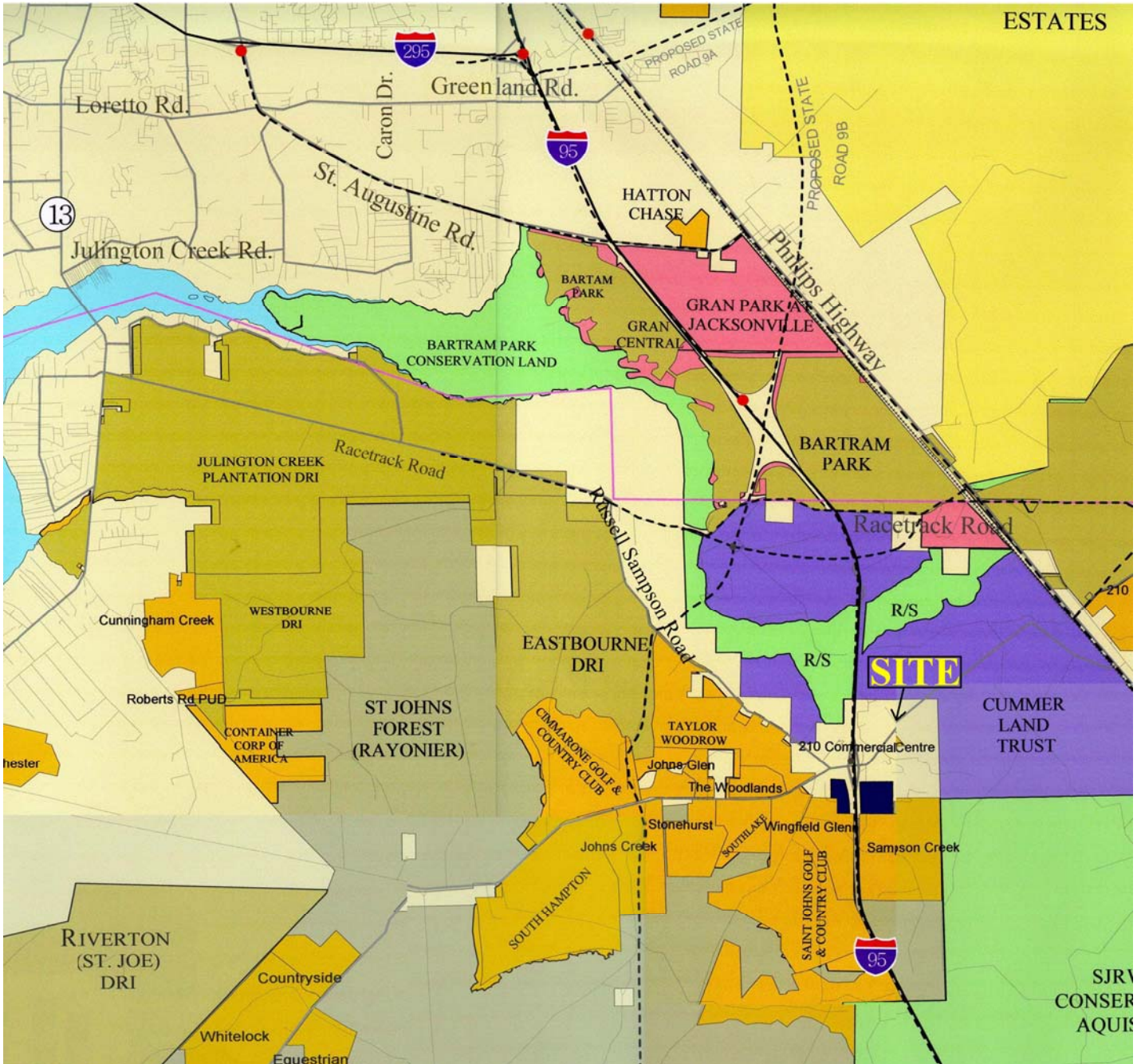


Demographics	3 Miles	5 Miles	10 Miles
Total Population	1,103	6,809	123,239
Median HH Income	\$91,061	\$88,319	\$80,572
Median Age	38.3	38.4	37.9
Total Employees	41	1,492	16,976

Contact: Mark Wainwright or Stanton Hudmon, CCIM
 Pine Street/RPS, LLC
 Office: 904.398.1044
 Fax: 904.396.2545
 e-mail: mwainwright@pinestreetrps.com or shudmon@pinestreetrps.com
www.pinestreetrps.com
 1923 Southampton Road
 Jacksonville, FL 32207

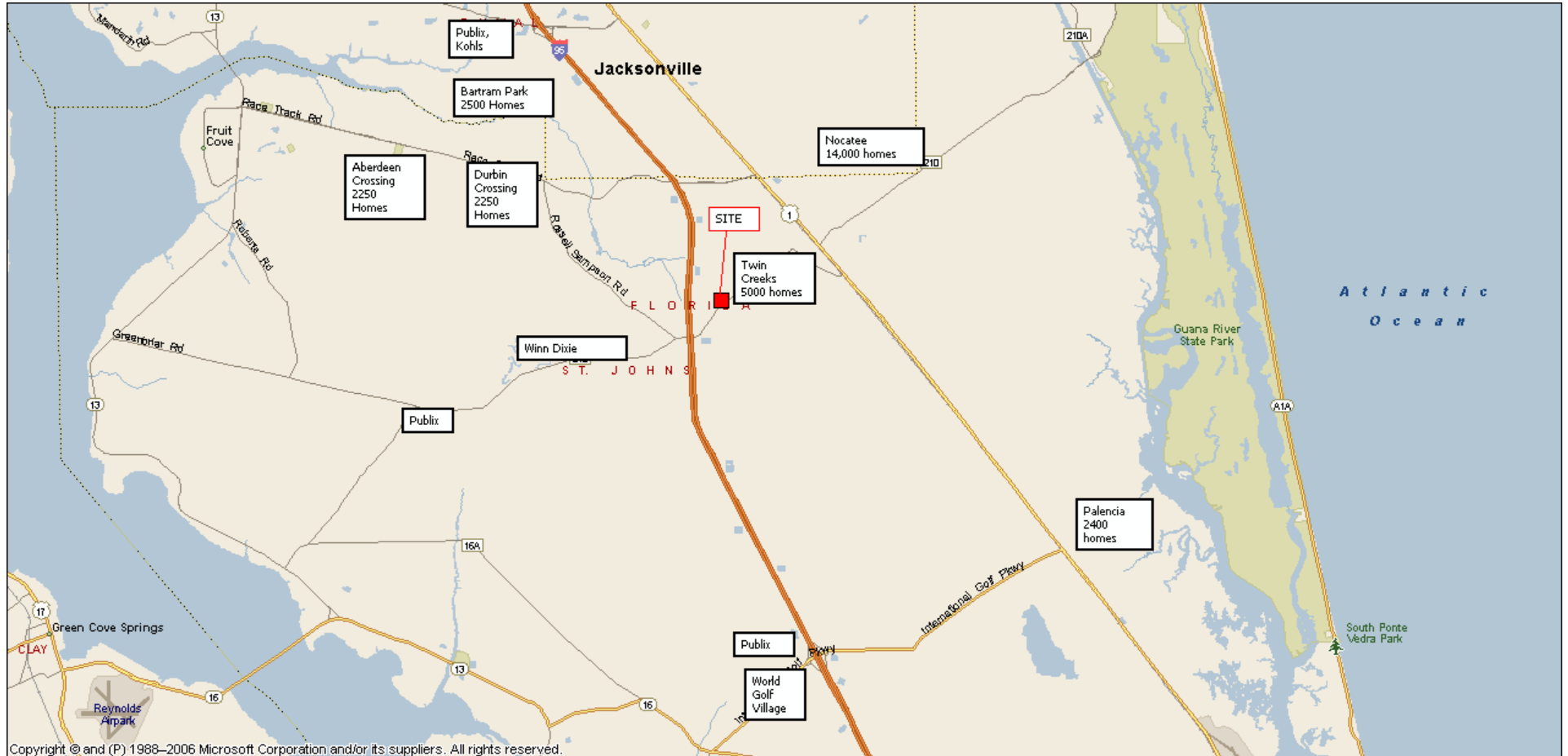


Pine Street / RPS



Map courtesy of England-Thims & Miller, Inc.

LOCATION MAP



Pine Street / RPS