

LAND FOR SALE
880 US 301 South
Baldwin, FL

Land Size:
2± Acres

Frontage:
627'

Zoning:
CCG-2

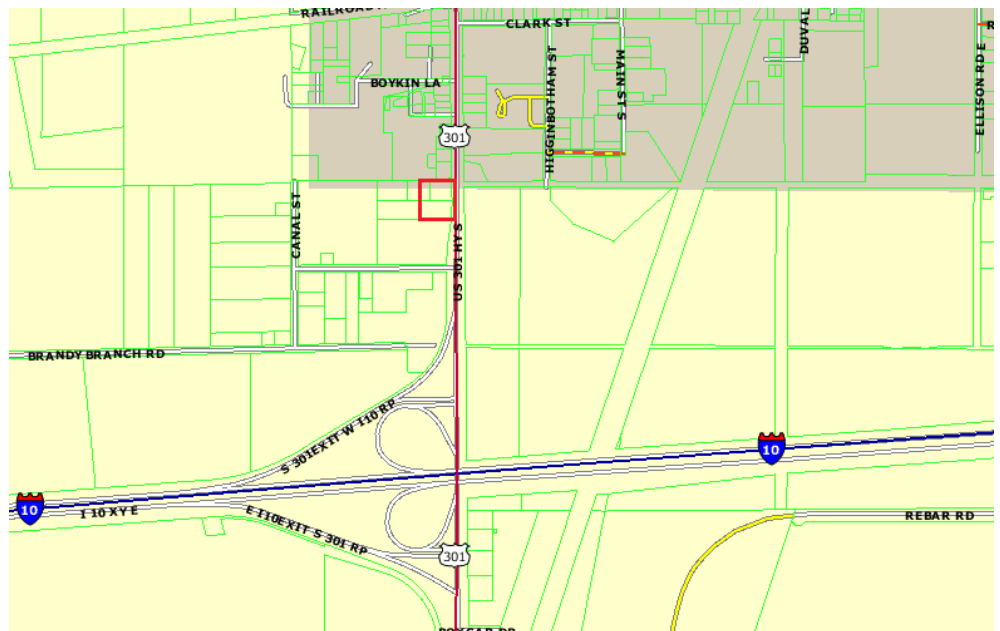
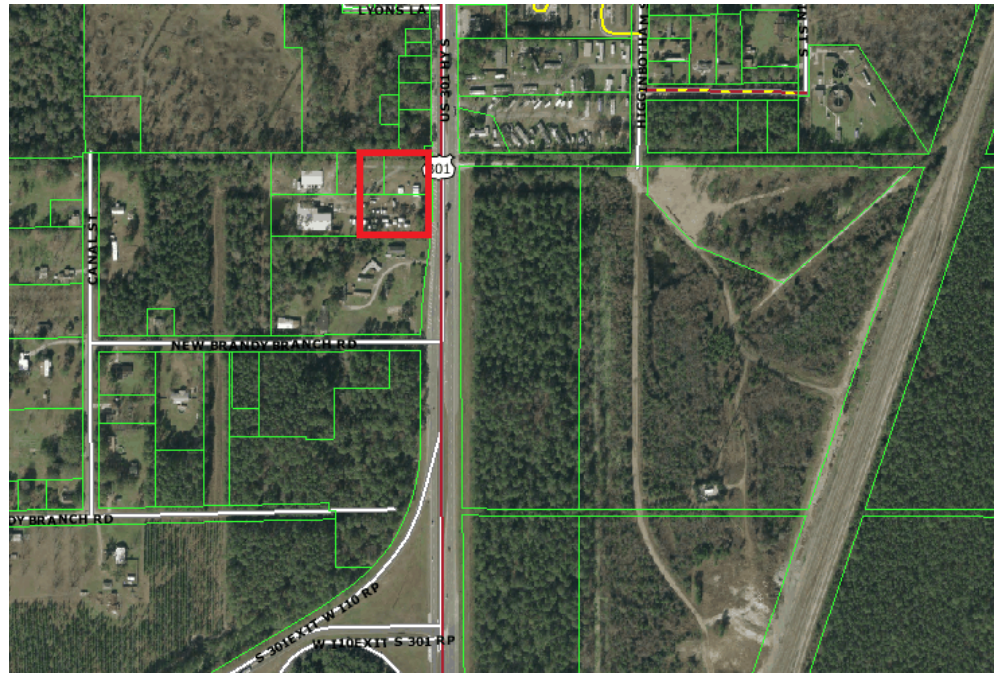
Utilities:
City Water and Sewer

Comments:

The property is located between I-10 and US 90 on US 301. It is strategically situated near the proposed 301 Baldwin Bypass and has good access with a medium cut.

Sale Rate:
\$520,000

AVAILABLE
Land For Sale



Contact: Mark Wainwright or Stanton Hudmon

Pine Street/RPS, LLC
Office: 904.398.1044
Fax: 904.396.2545

e-mail: mwainwright@pinestreetrps.com
shudmon@pinestreetrps.com

1923 Southampton Road
Jacksonville, FL 32207

www.pinestreetrps.com



