



Pine Street / RPS

For Lease

5105 Bowden Road

Location: 5105 Bowden Road, Jacksonville, FL
Total Size: 7,155 ± SF
Space Availability: 7,155 ± SF
Construction: Metal
Parking Spaces: 27
Year Built: 1979
Utilities: City Water & Sewer
Lease Rate: \$8.00 PSF, NNN

Comments: Located in the former Detroit Diesel office building. The building has excellent access to Phillips Highway and I-95.

Mark Wainwright | Pine Street/RPS, LLC
1923 Southampton Road | Jacksonville, FL 32207
Office: 904.398.1044 | Fax: 904.396.2545
Email: mwainwright@pinestreetrps.com |



Pine Street / RPS



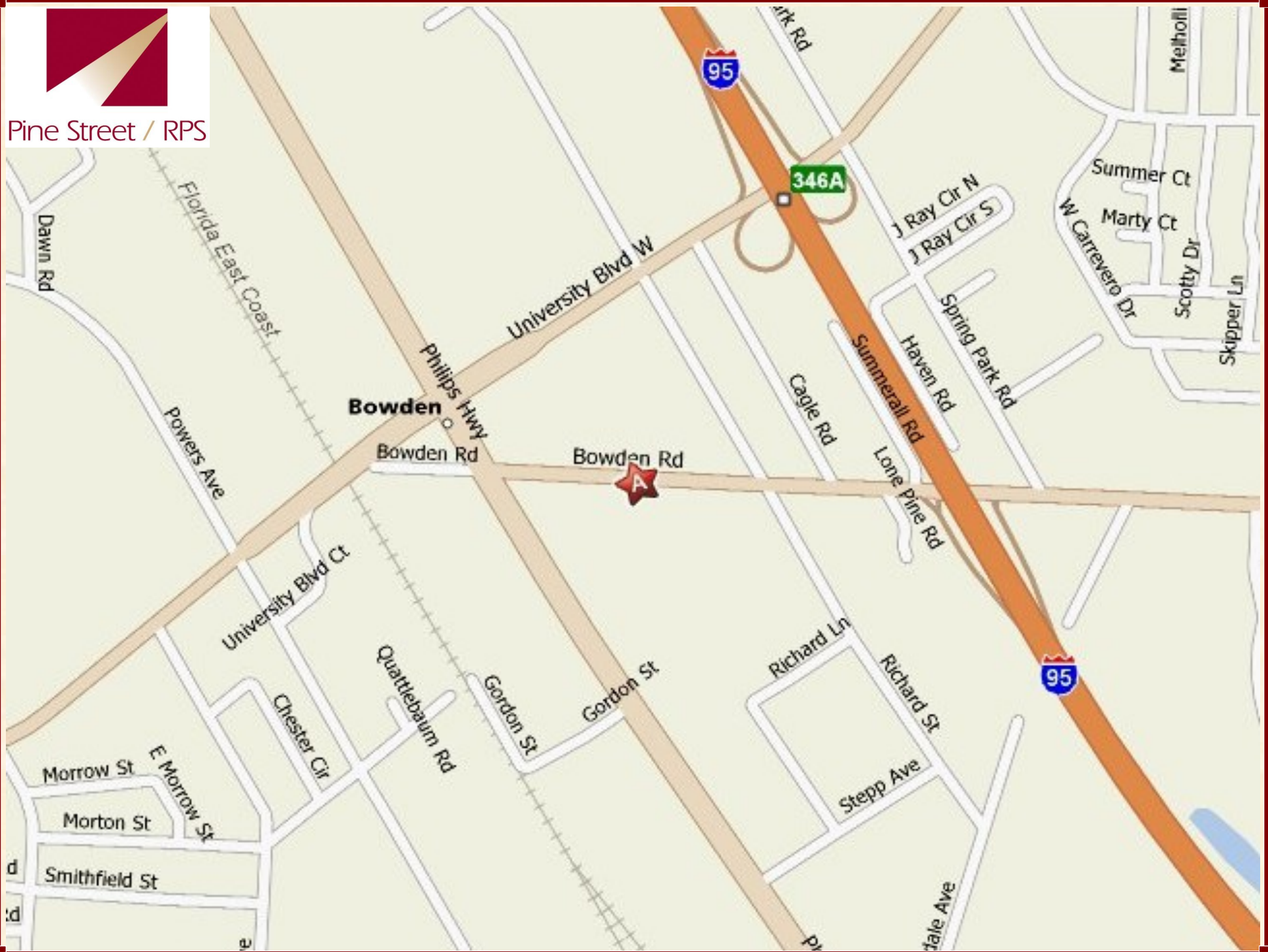


Pine Street / RPS



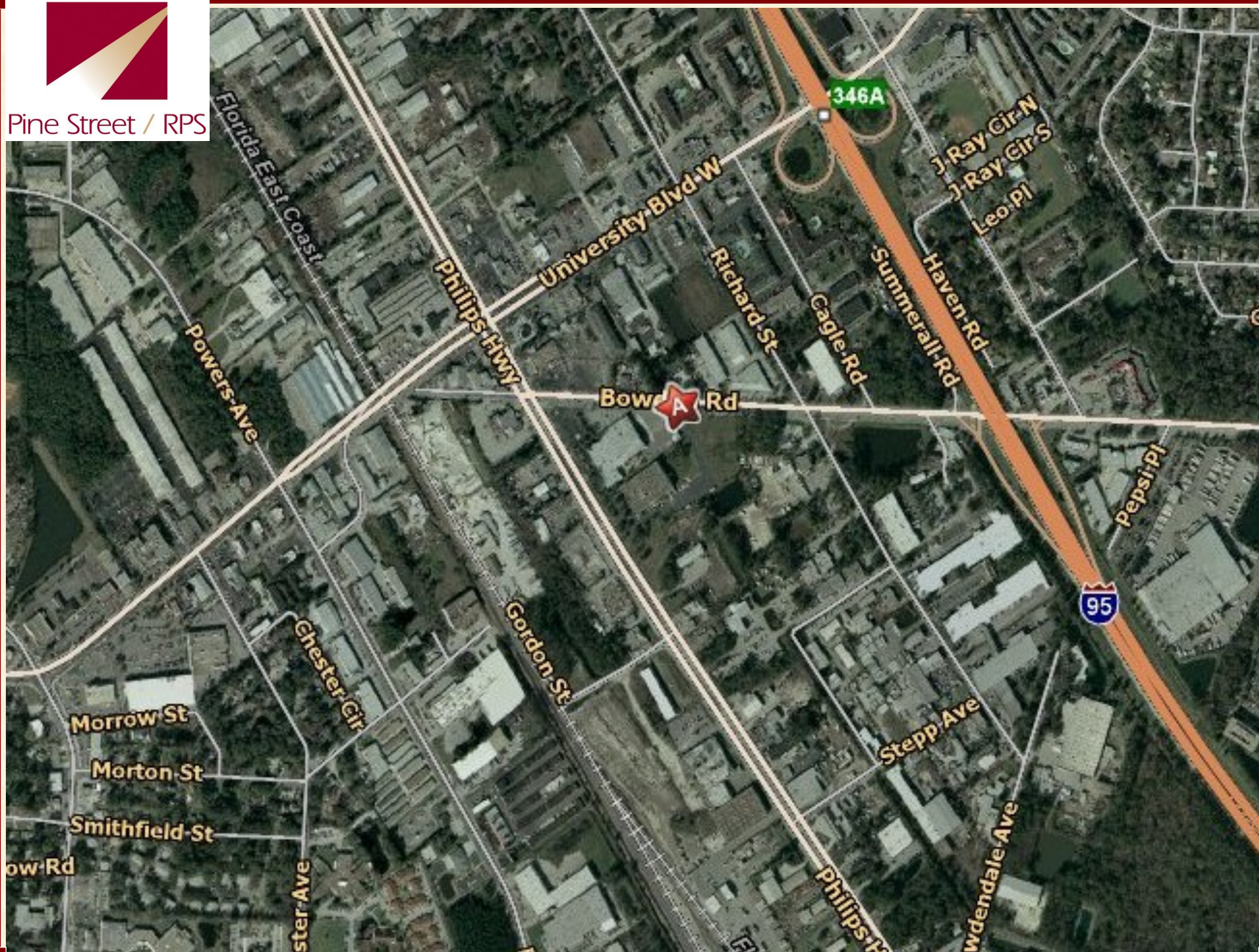


Pine Street / RPS



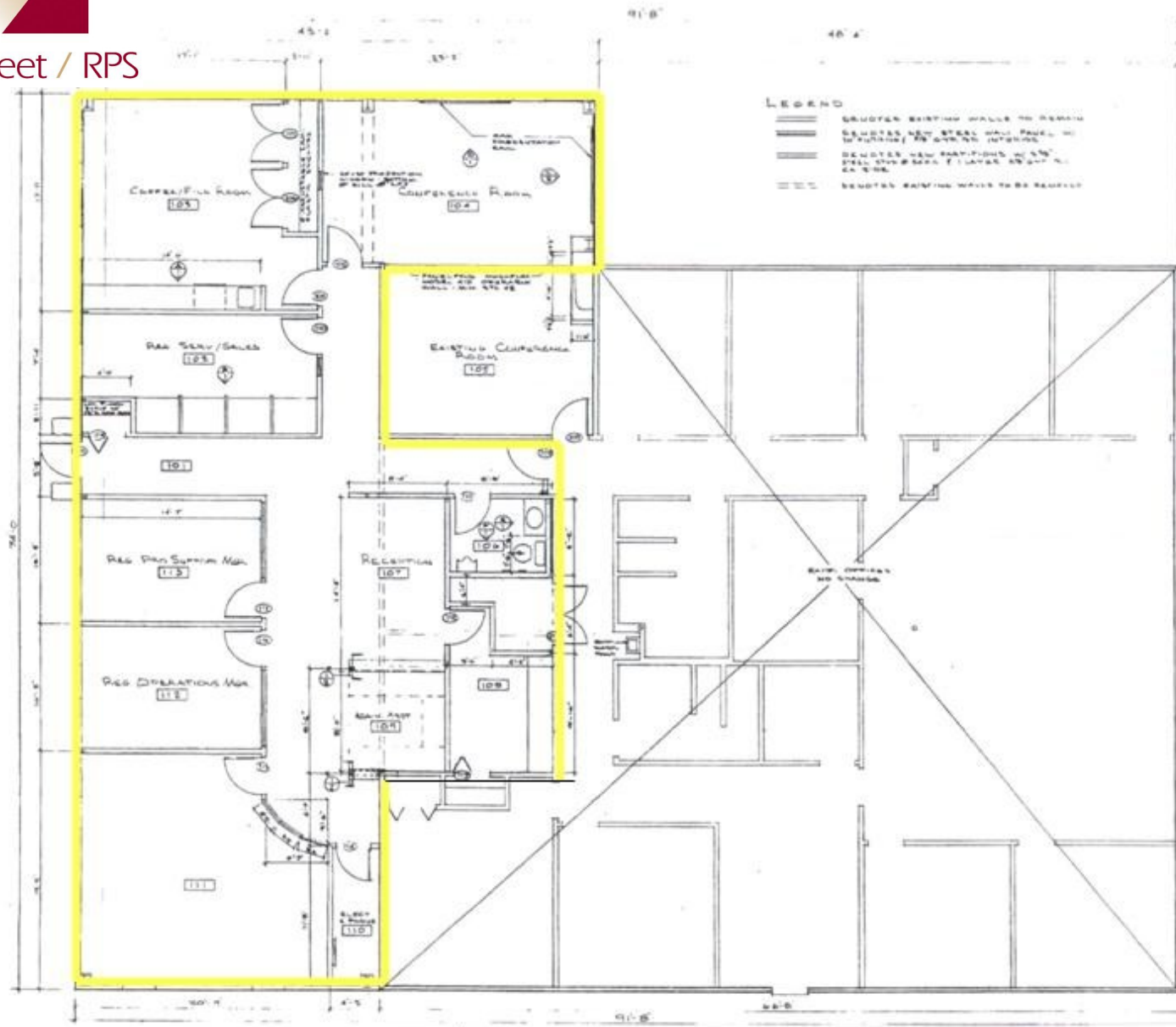


Pine Street / RPS

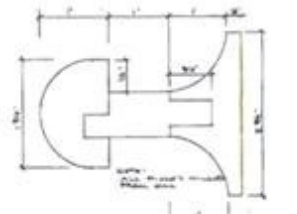




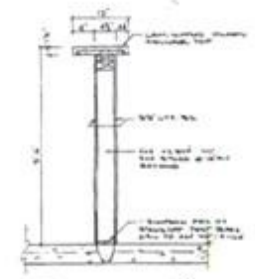
Pine Street / RPS



LEGEND
--- EXISTING EXTERIOR WALLS TO REMAIN
— GRATED NEW STEEL WALL PANELS TO BE INSTALLED TO EXTERIOR EXPOSURE
... REMOVE NEW PARTITIONS TO 4" STEEL STUDS @ 24" O.C. & 1" LAGERS @ 24" O.C. @ 9" DIA.
- - - EXISTING EXTERIOR WALLS TO BE REMOVED

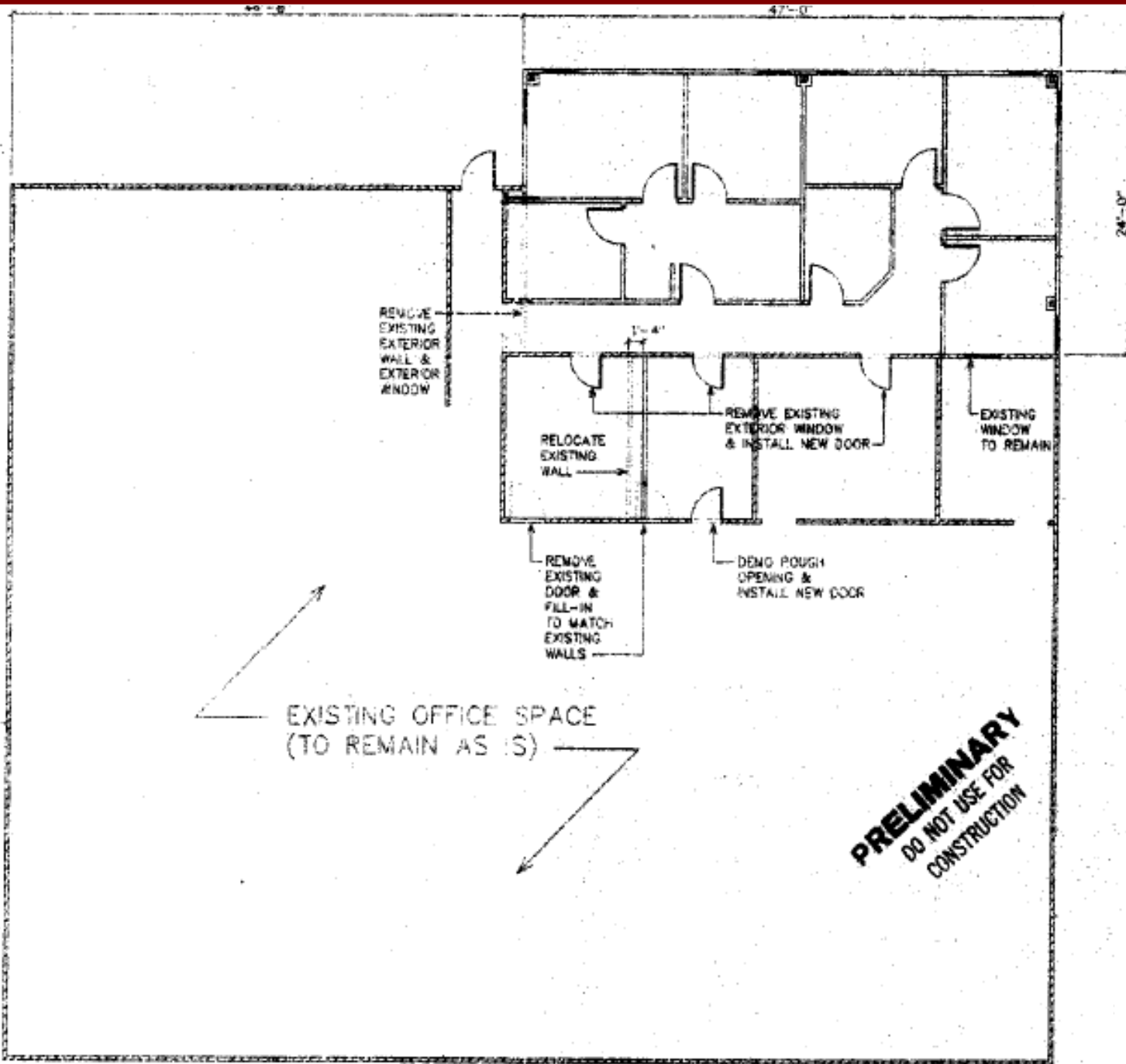


PRESENTATION RAIL
TYPICAL SECTION A-A'



SECTION 104 @ 1/4" = 1'-0"

FLOOR PLAN 1/8" = 1'-0"

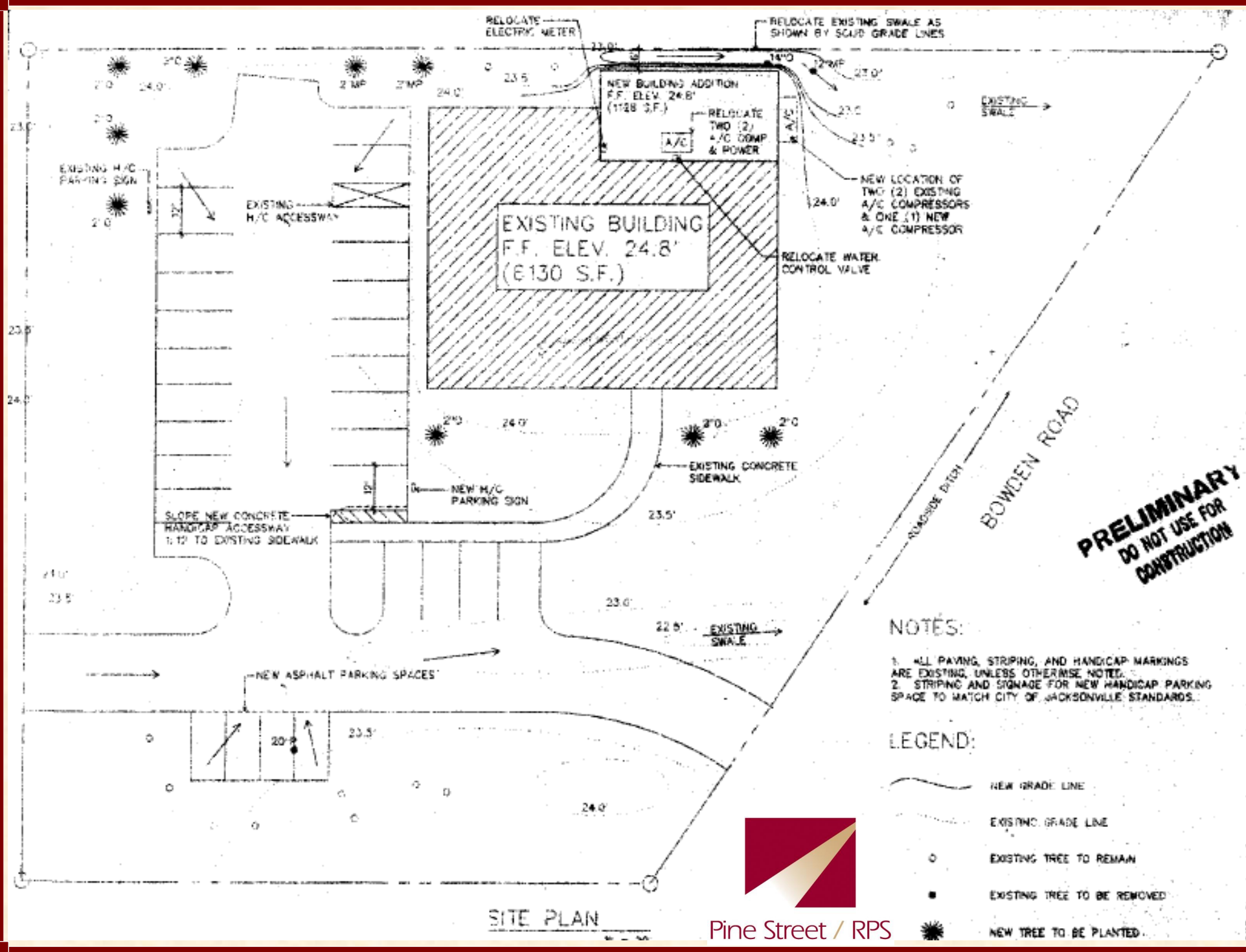


PRELIMINARY
DO NOT USE FOR
CONSTRUCTION



OFFICE BUILDING ADDITION PLAN










SITE PLAN

**PRELIMINARY
DO NOT USE FOR
CONSTRUCTION**

NOTES:

1. ALL PAVING, STRIPING, AND HANDICAP MARKINGS ARE EXISTING, UNLESS OTHERWISE NOTED.
2. STRIPING AND SIGNAGE FOR NEW HANDICAP PARKING SPACE TO MATCH CITY OF JACKSONVILLE STANDARDS.

LEGEND:

-  NEW GRADE LINE
-  EXISTING GRADE LINE
-  EXISTING TREE TO REMAIN
-  EXISTING TREE TO BE REMOVED
-  NEW TREE TO BE PLANTED


Pine Street / RPS

DATE: 10-1-2014