

**11637 Columbia Park  
Drive East  
Jacksonville, FL 32254**

Total Size: 14,878±sf

Office Area: 4,140±sf

Warehouse: 10,738±sf

Ceiling Height: 20'

Land Size: 1.31± acres

Loading: 5 grade level doors

Year Built: 1998

Zoning: Industrial Light (IL)

Utilities: City Water & Sewer

Sale Price: \$1,100,000  
(\$73.94 psf)

Comments: Ideal for a buyer/user with additional income from existing tenants occupying approximately 5,000 sf. The property has a concrete truck court, fenced, and located in Greenland Industrial Park near the intersection of interstate 9-A and U.S. 1.

## For Sale Office/Warehouse



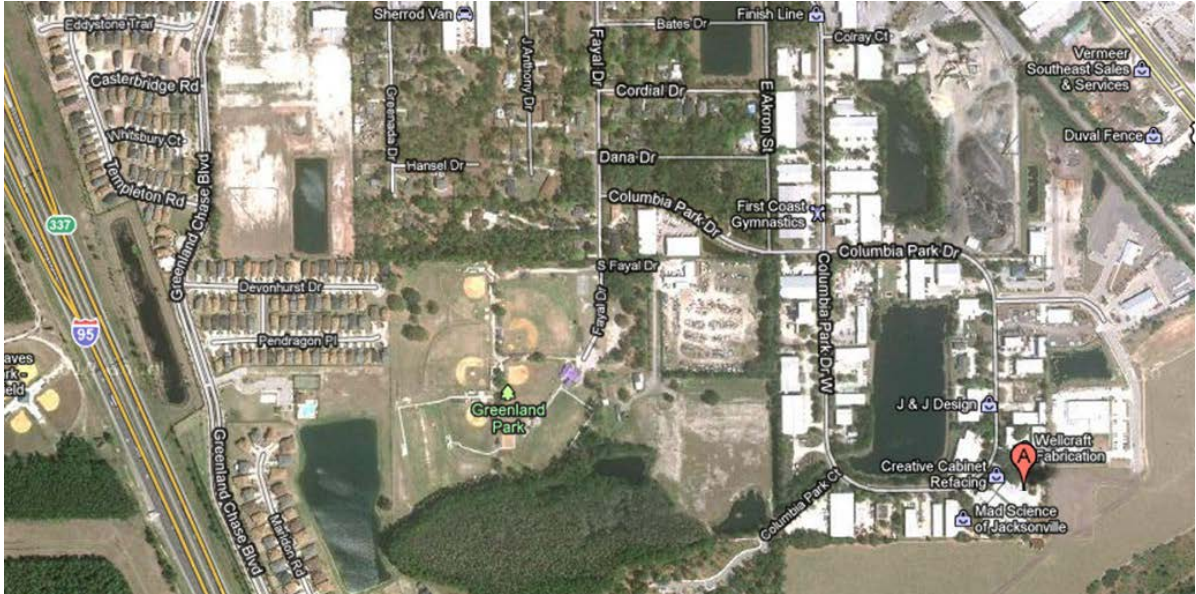
### For More Information:

Mark Wainwright  
Office: 904.398.1044  
Fax: 904.396.2545  
E-mail: [mwainwright@pinestreetrps.com](mailto:mwainwright@pinestreetrps.com)

Pine Street/RPS, LLC  
1923 Southampton Road  
Jacksonville, FL 32207  
[www.pinestreetrps.com](http://www.pinestreetrps.com)



Information provided is deemed to be accurate but is subject to errors and/or omissions.





Pine Street / RPS

